

# Mazda2

## Wiring Diagram Supplement

### CONTENTS

TITLE	Section
GROUND POINTS	Y
SYSTEM CIRCUIT DIAGRAM/ CONNECTOR LOCATIONS	B-G
ALPHABETICAL INDEX	AI

#### FOREWORD

This is a supplement to the following Wiring Diagram and covers only new major components not in the previous Wiring Diagrams.

Mazda2 Wiring Diagram  
5571-1E-02L  
European (L.H.D.) specs.

As all information in this supplement was the best available at the time of printing, all alterations related to modifications will be notified by Service Information.

**Mazda Motor Corporation**  
**HIROSHIMA, JAPAN**

#### APPLICATION:

This manual applies to vehicles beginning with the Vehicle Identification Numbers (VIN) on the following page.

## WARNING

Servicing a vehicle can be dangerous. If you have not received service-related training, the risks of injury, property damage, and failure of servicing increase. The recommended servicing procedures for the vehicle in this workshop manual were developed with Mazda-trained technicians in mind. This manual may be useful to non-Mazda trained technicians, but a technician with our service-related training and experience will be at less risk when performing service operations. However, all users of this manual are expected at least to know general safety procedures.

This manual contains "Warnings" and "Cautions" applicable to risks not normally encountered in a general technician's experience. They should be followed to reduce the risk of injury and the risk that improper service or repair may damage the vehicle or render it unsafe. It is also important to understand that the "Warnings" and "Cautions" are not exhaustive. It is impossible to warn of all the hazardous consequences that might result from failure to follow the procedures.

The procedures recommended and described in this manual are effective methods of performing service and repair. Some require tools specifically designed for a specific purpose. Persons using procedures and tools which are not recommended by Mazda Motor Corporation must satisfy themselves thoroughly that neither personal safety nor safety of the vehicle will be jeopardized.

The contents of this manual, including drawings and specifications, are the latest available at the time of printing, and Mazda Motor Corporation reserves the right to change the vehicle designs and alter the contents of this manual without notice and without incurring obligation.

Parts should be replaced with genuine Mazda replacement parts or with parts which match the quality of genuine Mazda replacement parts. Persons using replacement parts of lesser quality than that of genuine Mazda replacement parts must satisfy themselves thoroughly that neither personal safety nor safety of the vehicle will be jeopardized.

Mazda Motor Corporation is not responsible for any problems which may arise from the use of this manual. The cause of such problems includes but is not limited to insufficient service-related training, use of improper tools, use of replacement parts of lesser quality than that of genuine Mazda replacement parts, or not being aware of any revision of this manual.

**VEHICLE IDENTIFICATION NUMBERS (VIN)  
(CHASSIS NUMBER)**

JMZ NB2WPJN\*\* 43830—  
JMZ NC2WPJN\*\* 43830—  
JMZ NCAWPJN\*\* 43830—  
JMZ ND2WPJN\*\* 43830—  
JMZ NE2WPJN\*\* 43830—  
JMZ NEAWPJN\*\* 43830—

**WIRING COLOR CODE**

<b>COLOR</b>	<b>CODE</b>	<b>COLOR</b>	<b>CODE</b>
BLACK	B	ORANGE	O
BLUE	L	PINK	P
BROWN	BR	RED	R
DARK BLUE	DL	SKY BLUE	SB
DARK GREEN	DG	TAN	T
GRAY	GY	VIOLET	V
GREEN	G	WHITE	W
LIGHT BLUE	LB	YELLOW	Y
LIGHT GREEN	LG		

# Service Information

Mazda Motor Corporation  
P.O.Box 18, Hiroshima  
730-8670 Japan



# MAZDA

Category No.	<b>Literature</b>	Ref. No. L175/04	Page 1 of 1
Coverage <input type="checkbox"/> Distributor only <input checked="" type="checkbox"/> Please inform your dealers		Date issued November 4, 2004	
Please convey this information to your <input type="checkbox"/> Warranty Dept. <input type="checkbox"/> Parts Dept. <input checked="" type="checkbox"/> Training Dept. <input checked="" type="checkbox"/> Field Rep		Attachment: 1	
Applicable Model  Mazda2		Applicable Country or Specification  European (L.H.D.) specs.	

## Subject: Additions/Changes to Service Materials

The additions and/or changes have been made to the following service materials in response to engineering modifications.

Attached are copies of the pages to be added or revised. Please make copies of these sheets as necessary, then insert and/or replace the applicable pages in each manual in the Mazda2 binder with the attached pages. The material to be corrected is shown on the top of each page.

The additions and/or changes are shown enclosed in broken lines or underlined on the revised page.

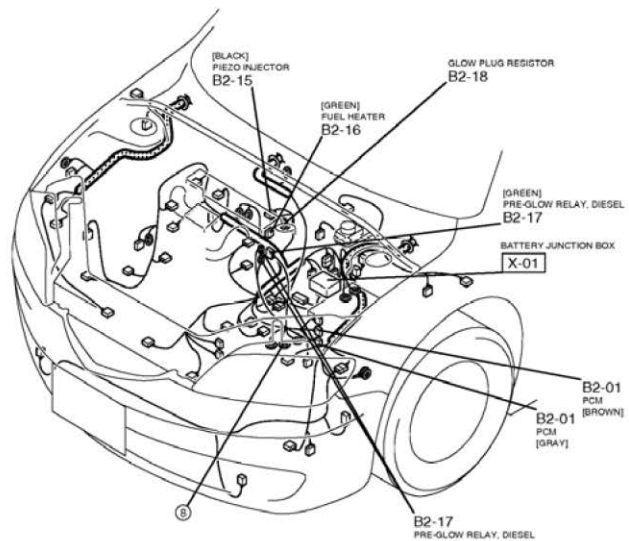
### Applied Materials:

Manual Name (Form No.)	Page (Non-Revised Page is shown in italics.)	Remarks
Mazda2 Wiring Diagram Supplement (5609-1E-03K)	<i>14-1, 14-2</i>	FUEL HEATER

Service Material Planning Group  
Vehicle Service & Program Department



HARNESS SYMBOL:  (F)  (E)  (R)



14-1

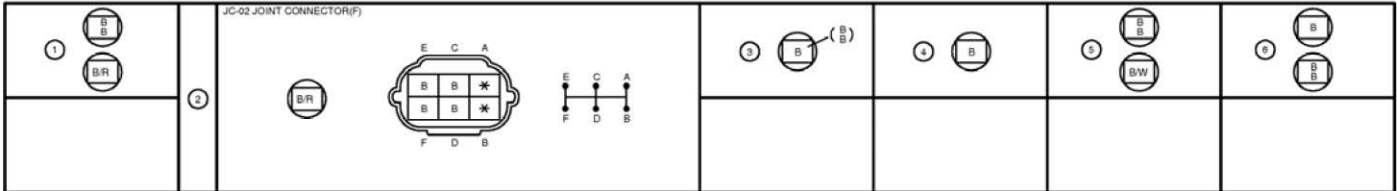


# SYSTEM INDEX

<b>GROUND POINT</b> .....	2	<b>AIR CONDITIONING-RELATED SYSTEM</b>	
<b>ENGINE-RELATED SYSTEM</b>		AIR CONDITIONING	
ELECTRONIC ENGINE CONTROL		WITHOUT AUDIO SYSTEM .....	20
MZ-CD 1.4 DI Turbo.....	6	HEATING AND VENTILATION .....	20
<b>BODY-RELATED SYSTEM</b>		POSITIVE TEMPERATURE	
WINDSHIELD WIPER AND WASHER .....	18	COEFFICIENT (PTC) HEATER .....	22
		<b>ALPHABETICAL INDEX</b> .....	24

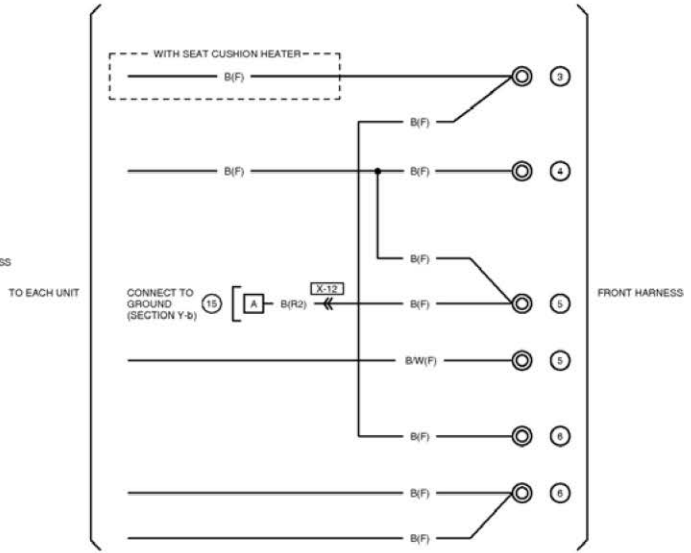
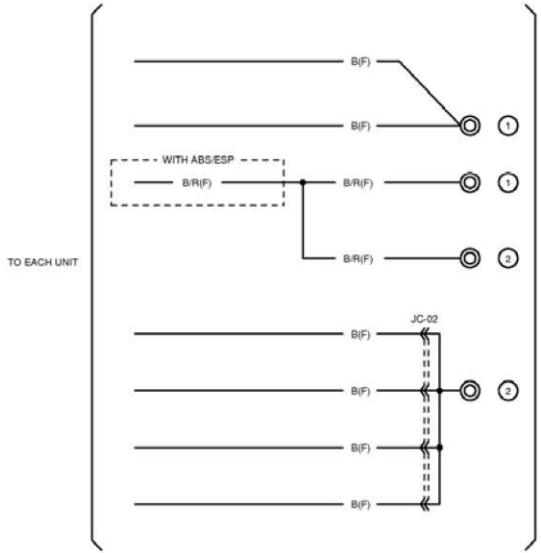
# GROUND POINT

# Y-a



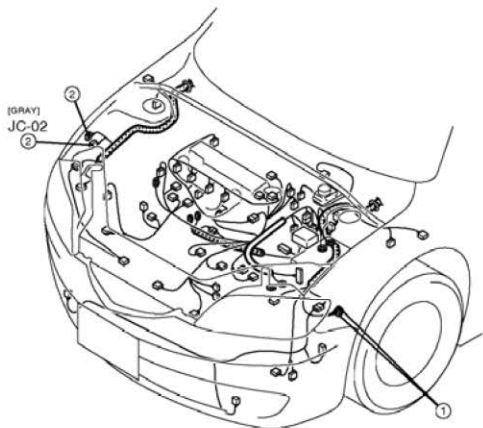
\* \_ VACANT  
( ) \_ WITH SEAT CUSHION HEATER

2

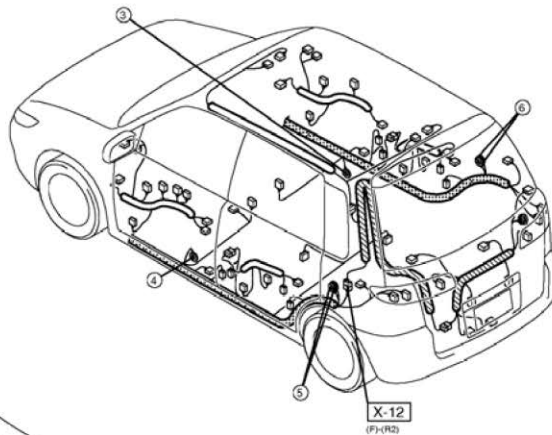
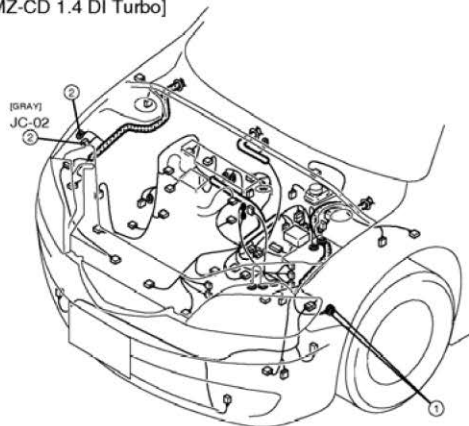


HARNESS SYMBOL:  (F)  (E)  (R)

[EXCEPT MZ-CD 1.4 DI Turbo]

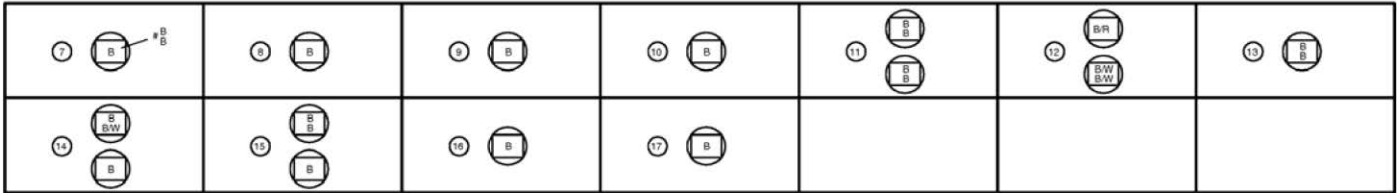


[MZ-CD 1.4 DI Turbo]

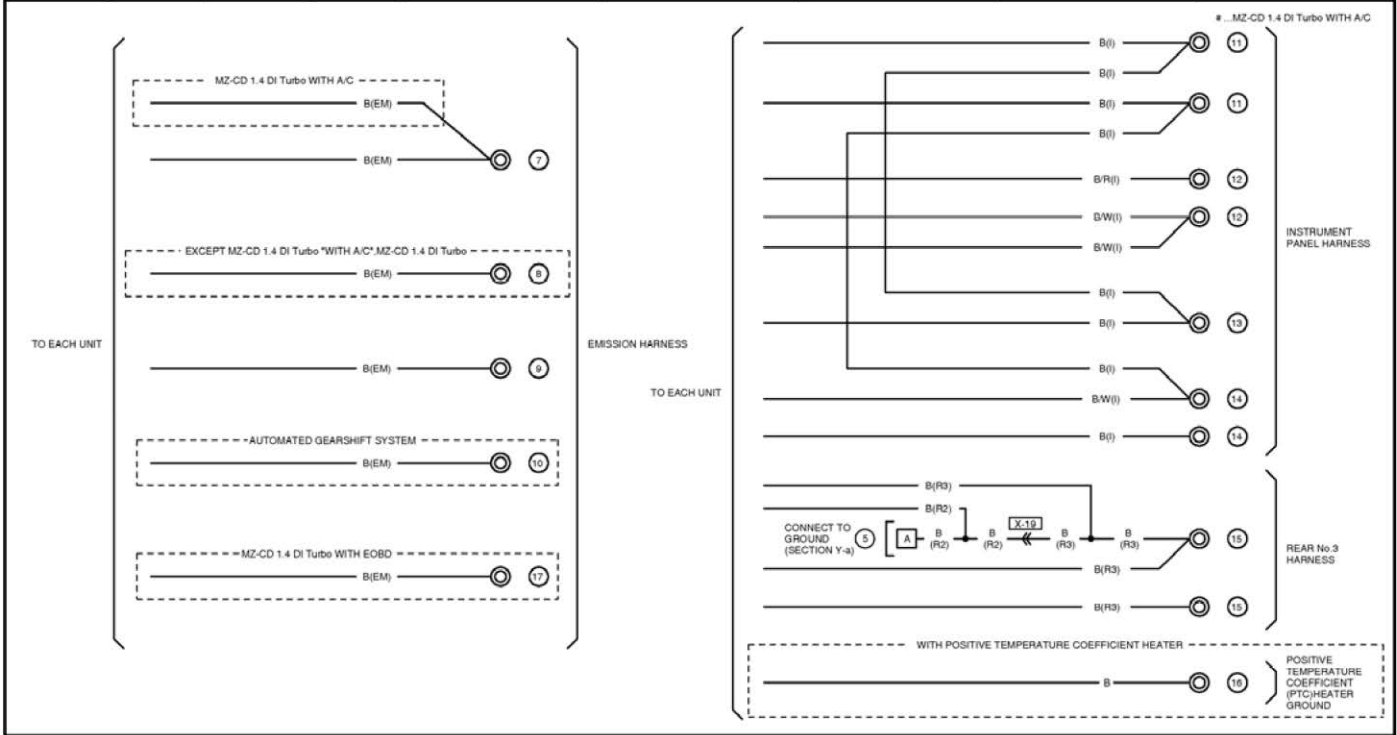


# GROUND POINT

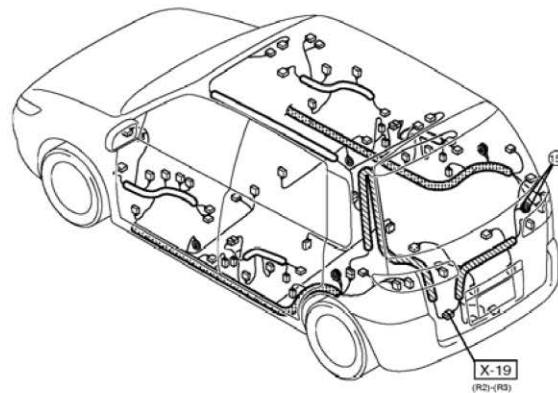
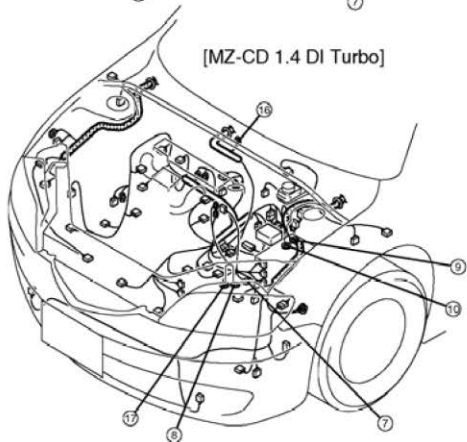
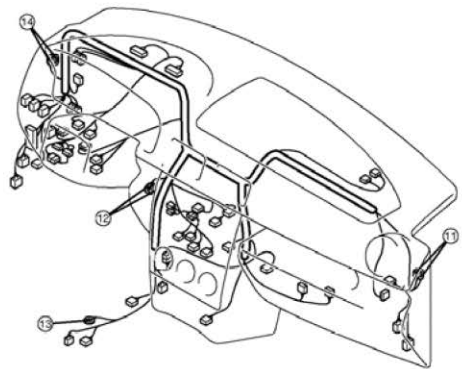
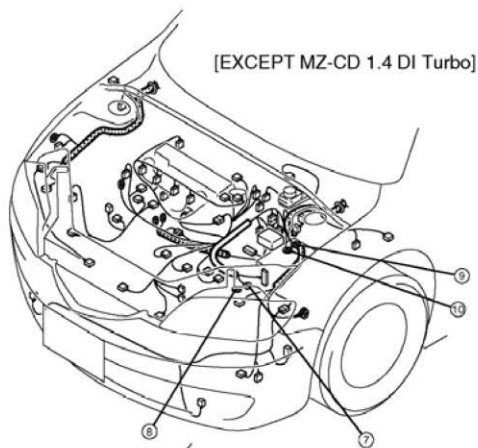
# Y-b



4



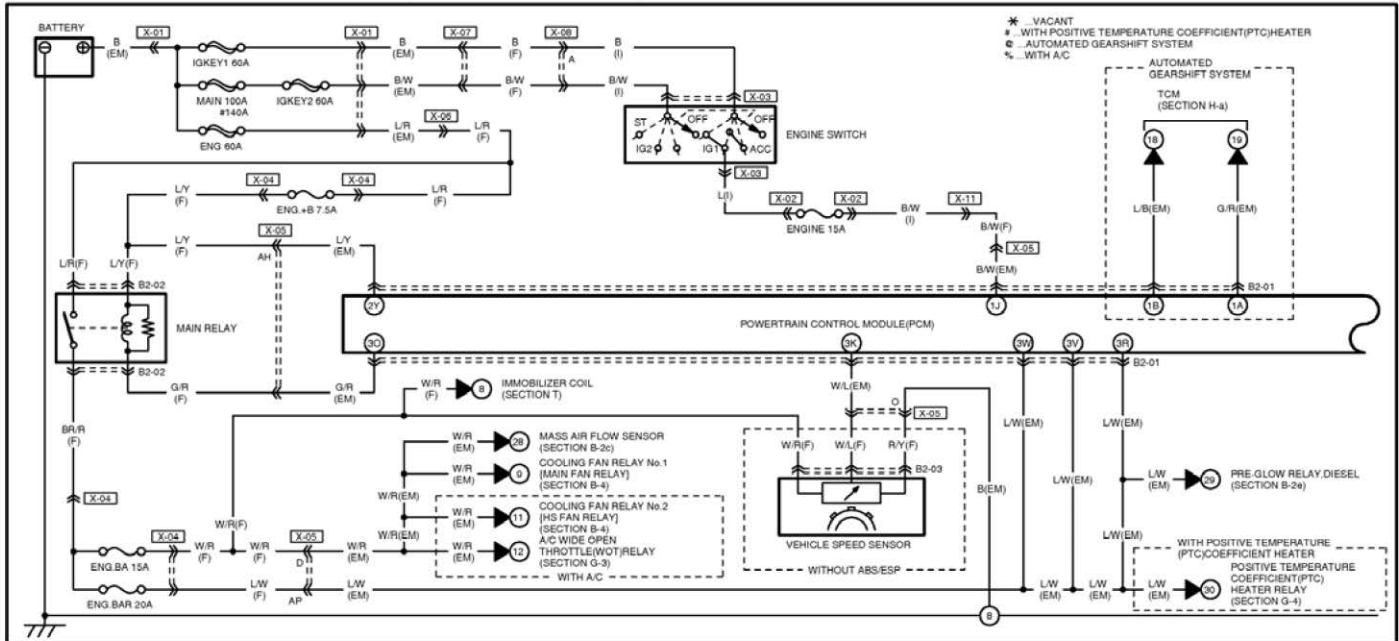
HARNESS SYMBOL:  (F)  (E)  (R)



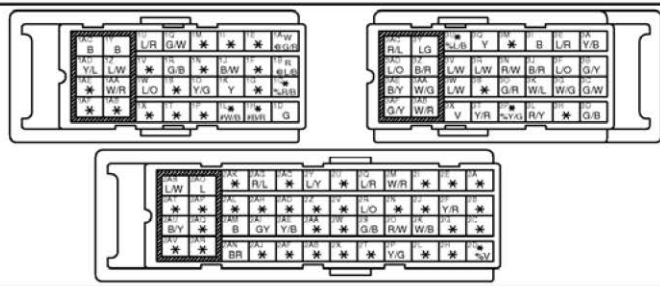
X-19  
(R2)-(R3)

# ELECTRONIC ENGINE CONTROL (MZ-CD 1.4 DI Turbo)

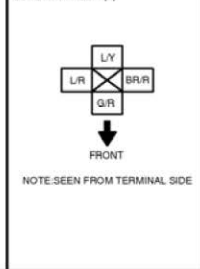
# B-2a



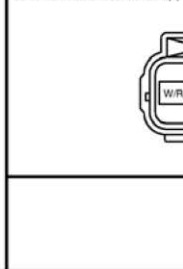
B2-01 PCM(EM)



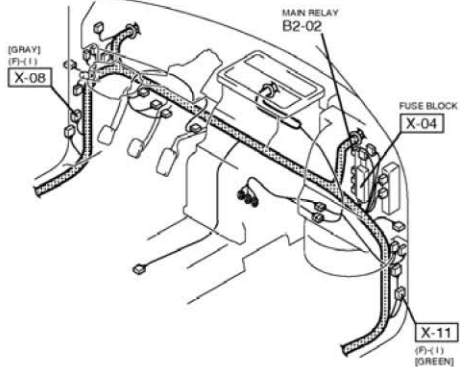
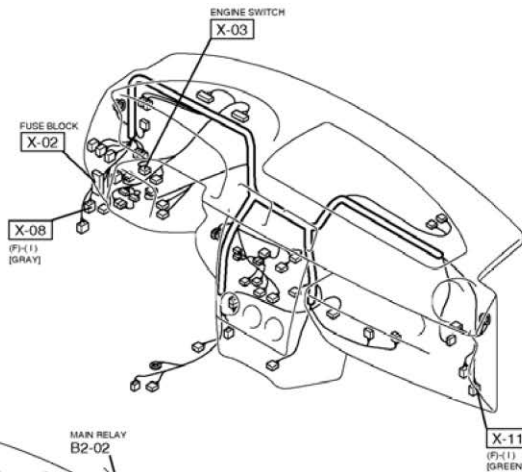
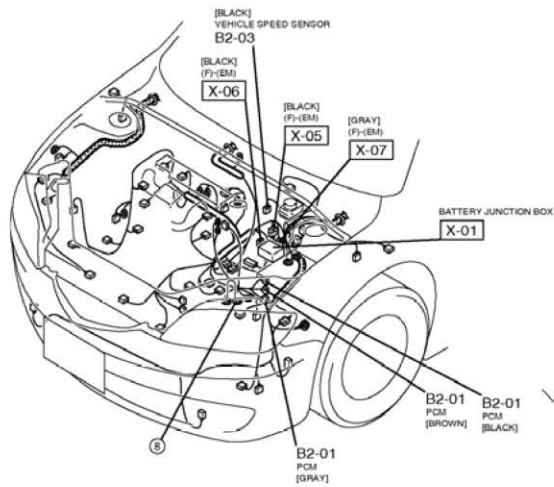
B2-02 MAIN RELAY(F)



B2-03 VEHICLE SPEED SENSOR(F)

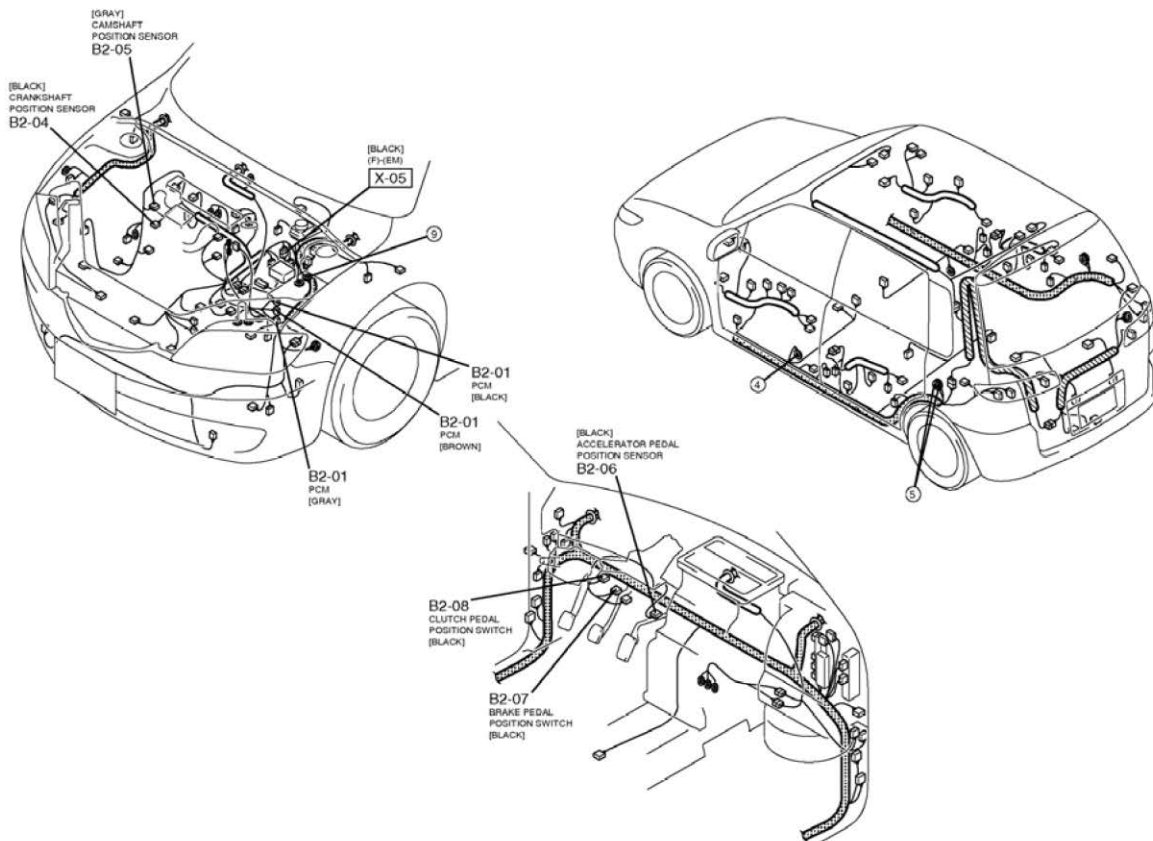


HARNESS SYMBOL:  (F)  (E)  (R)





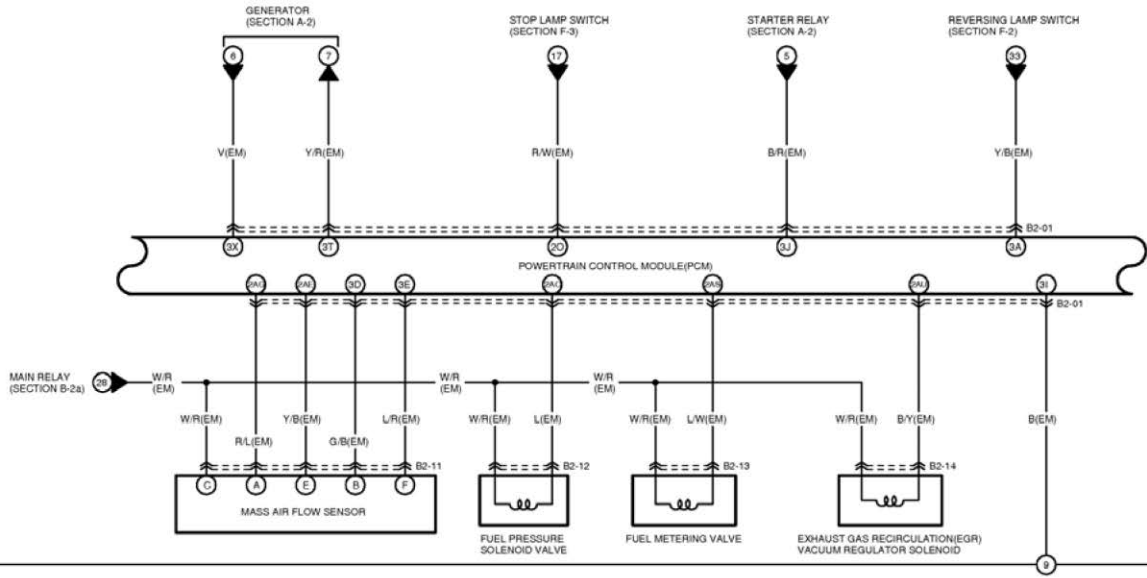
HARNESS SYMBOL:  (F)  (E)  (R)



# ELECTRONIC ENGINE CONTROL (MZ-CD 1.4 DI Turbo)

**B-2c**

◻ WITH A/C  
\* \_VACANT

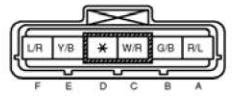


10

B2-01 PCM(EM)



B2-11 MASS AIR FLOW SENSOR(EM)



B2-12 FUEL PRESSURE SOLENOID VALVE(EM)



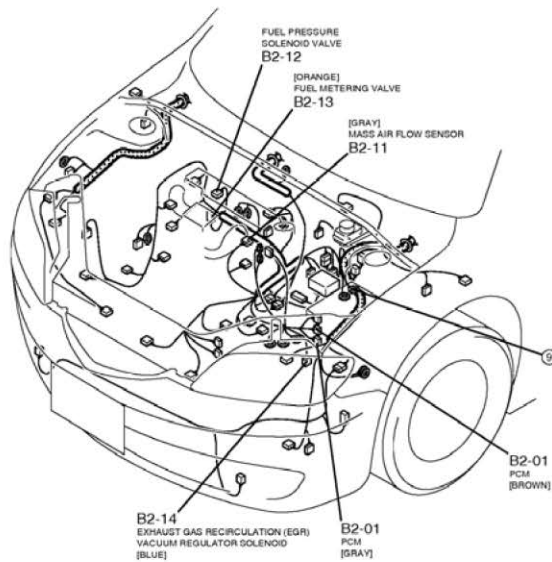
B2-13 FUEL METERING VALVE(EM)



B2-14 EXHAUST GAS RECIRCULATION(EGR) VACUUM REGULATOR SOLENOID(EM)

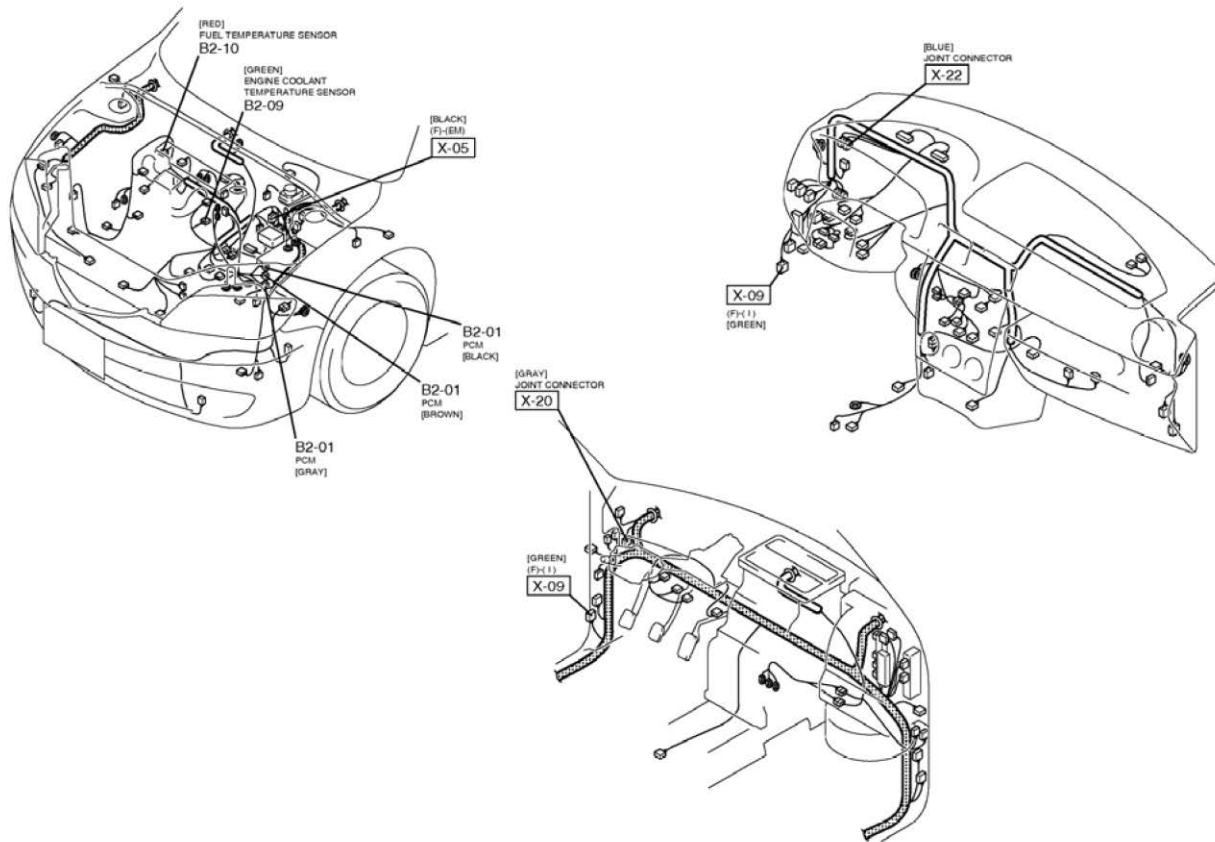


HARNESS SYMBOL:  (F)  (E)  (R)



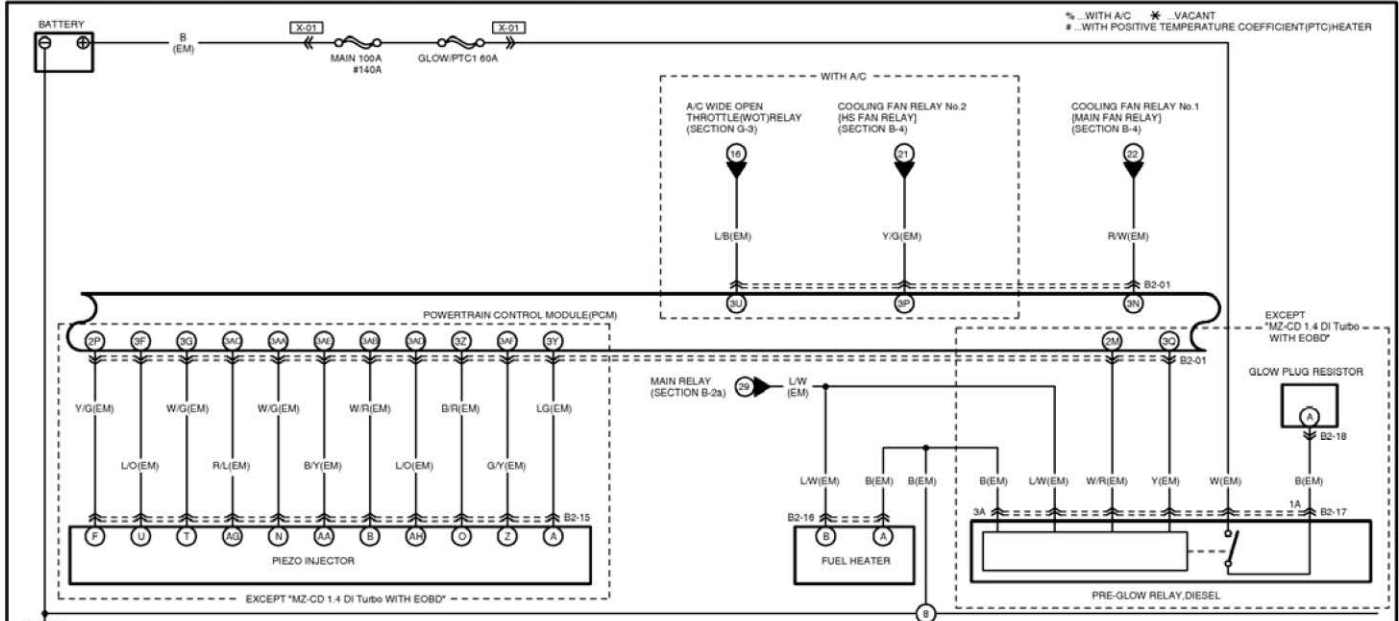


HARNESS SYMBOL:  (F)  (E)  (R)



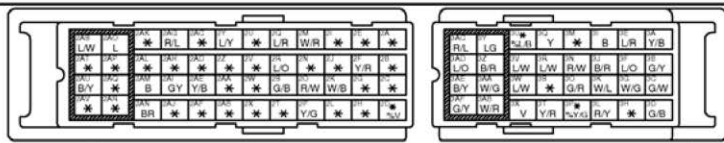
# ELECTRONIC ENGINE CONTROL (MZ-CD 1.4 DI Turbo)

**B-2e**

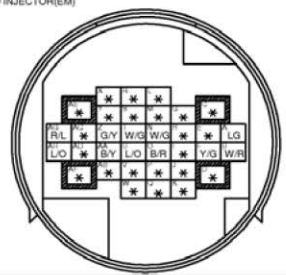


14

B2-01 PCM(EM)



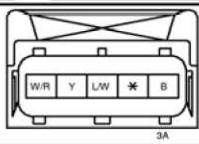
B2-15 PIEZO INJECTOR(EM)



B2-16 FUEL HEATER(EM)



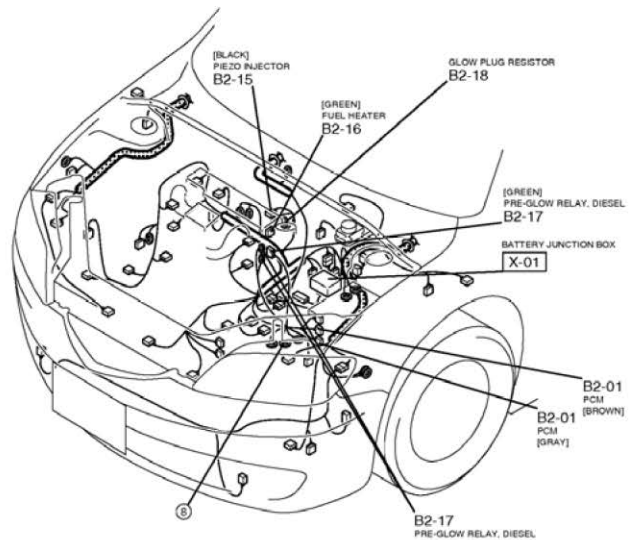
B2-17 PRE-GLOW RELAY DIESEL(EM)



B2-18 GLOW PLUG RESISTOR(EM)



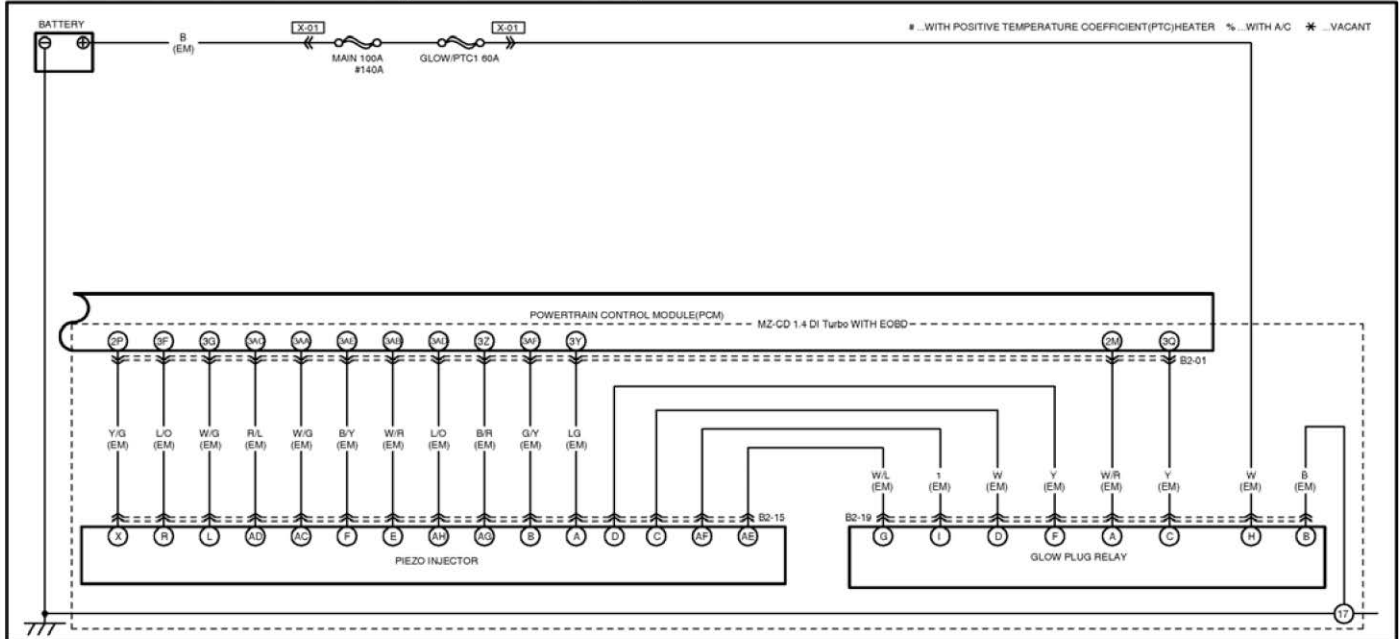
HARNESS SYMBOL:  (F)  (E)  (R)



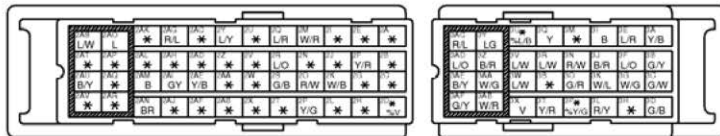
# ELECTRONIC ENGINE CONTROL (MZ-CD 1.4 DI Turbo)

**B-2f**

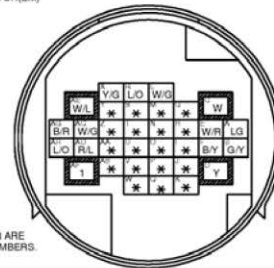
16



B2-01 PCM(EM)

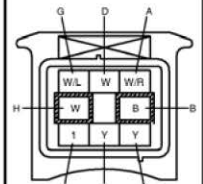


B2-15 PIEZO INJECTOR(EM)



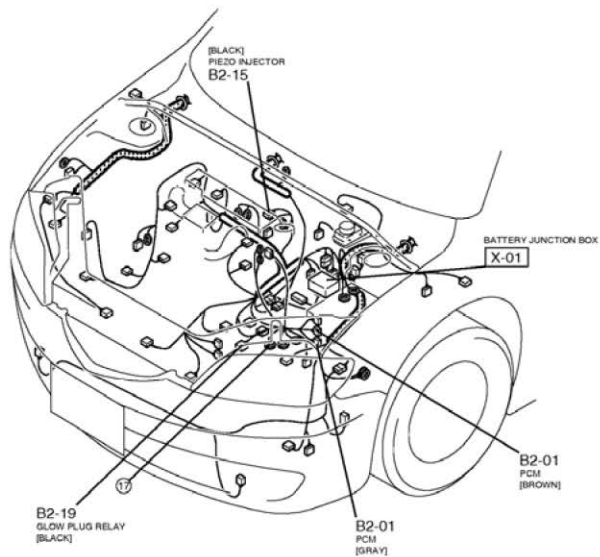
TERMINALS OF THIS CONNECTOR ARE INDICATED BY NUMBERS.

B2-19 GLOW PLUG RELAY(EM)



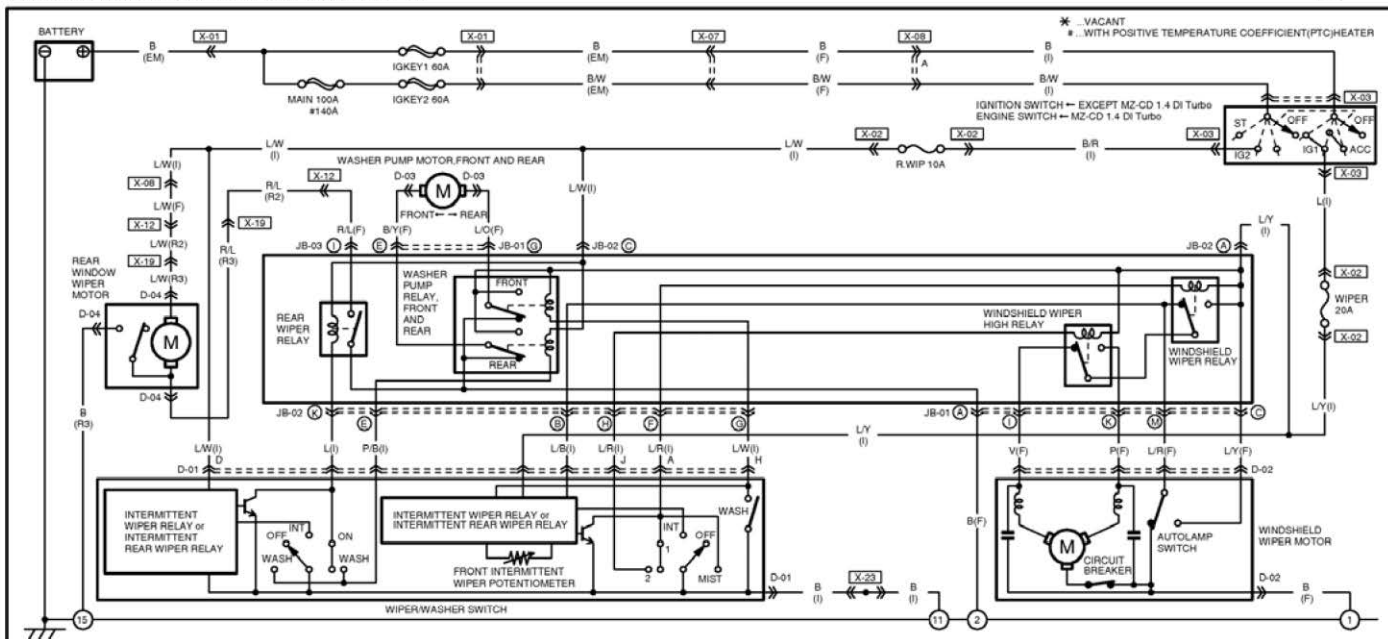
TERMINALS OF THIS CONNECTOR ARE INDICATED BY NUMBERS.

HARNESS SYMBOL:  (F)  (E)  (R)



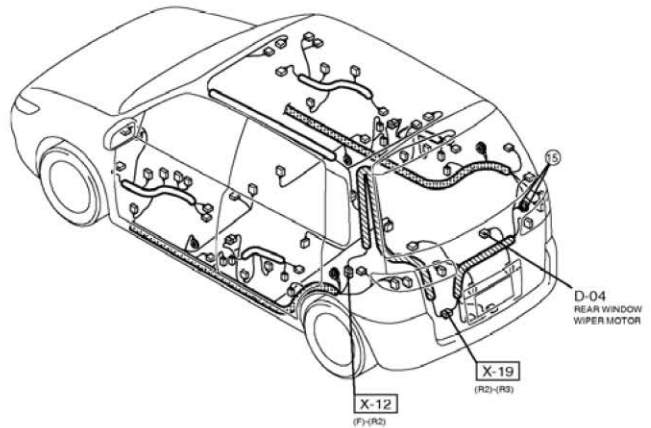
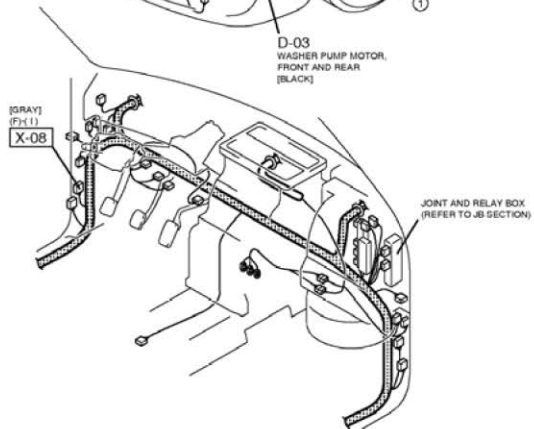
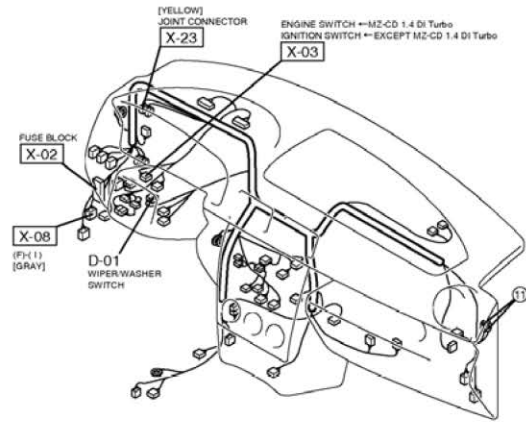
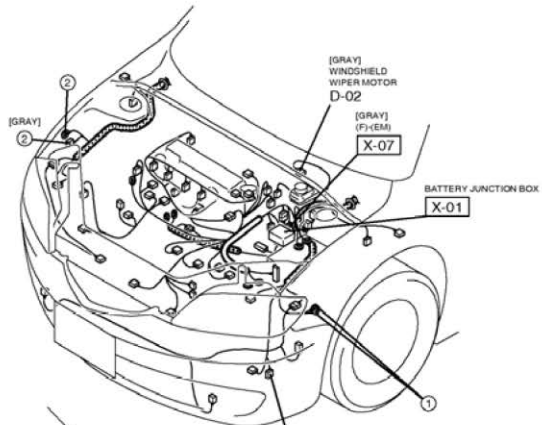
# WINDSHIELD WIPER AND WASHER

D



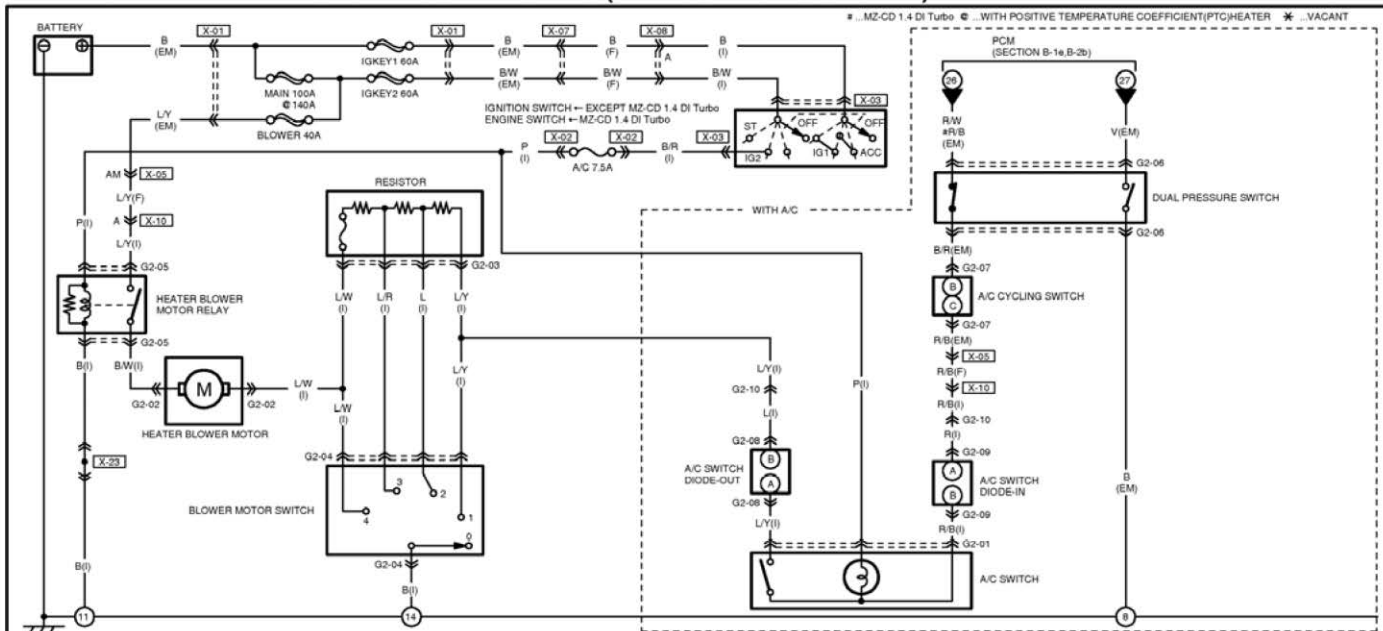
<p>D-01 WIPER/WASHER SWITCH(I)</p>	<p>D-02 WINDSHIELD WIPER MOTOR(F)</p>	<p>D-03 WASHER PUMP MOTOR, FRONT AND REAR(F)</p>	<p>D-04 REAR WINDOW WIPER MOTOR(L/R)</p>	

HARNESS SYMBOL:  (F)  (E)  (R)



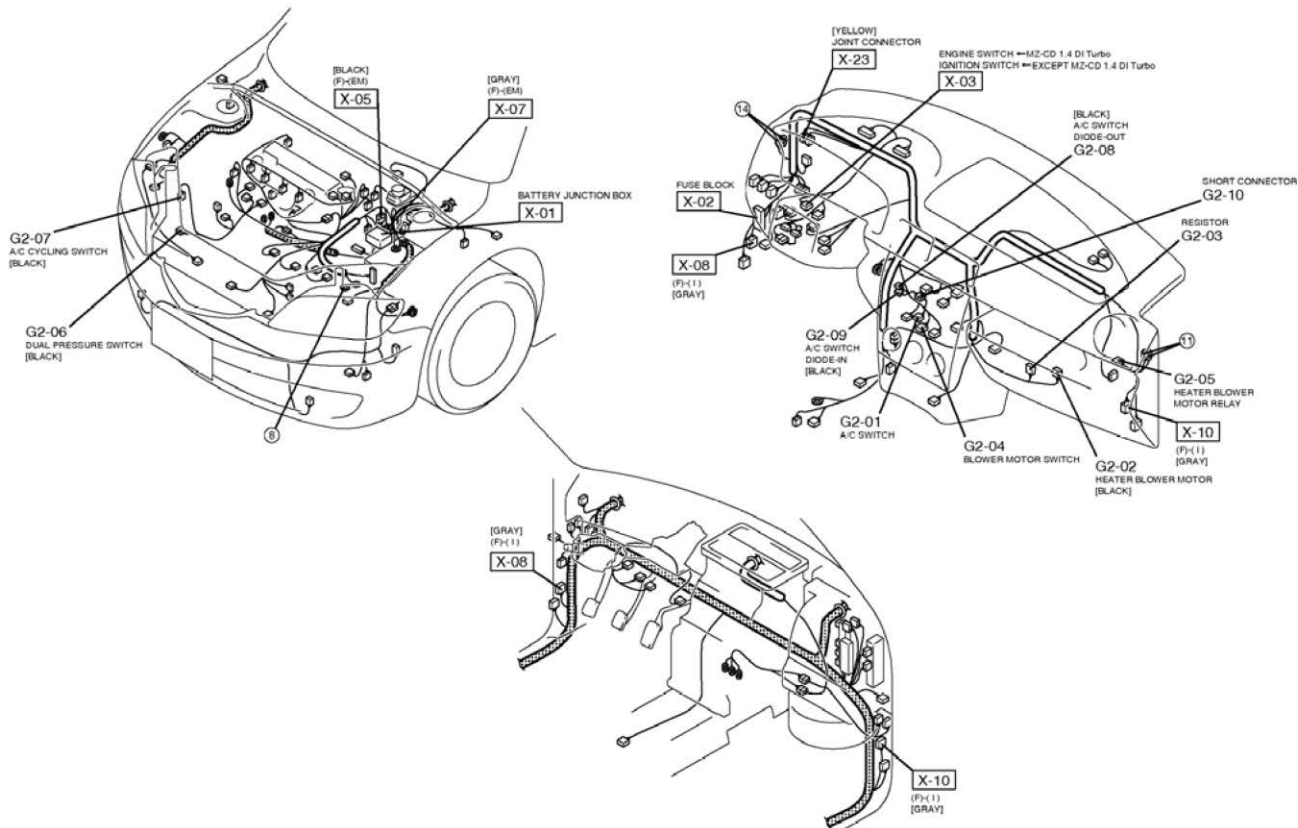
# HEATING AND VENTILATION / AIR CONDITIONING (WITHOUT AUDIO SYSTEM)

# G-2



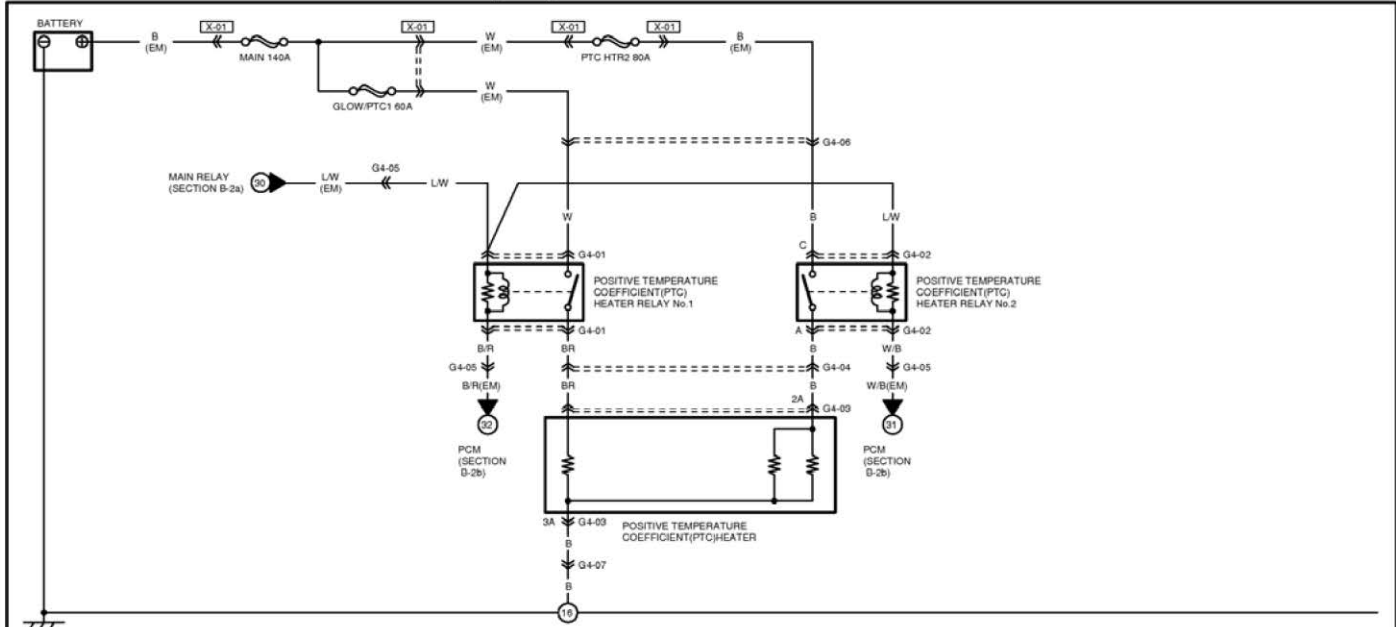
<p>G2-01 A/C SWITCH(I)</p>	<p>G2-02 HEATER BLOWER MOTOR(I)</p>	<p>G2-03 RESISTOR(I)</p>	<p>G2-04 BLOWER MOTOR SWITCH(I)</p>	<p>G2-05 HEATER BLOWER MOTOR RELAY (I)</p>	<p>G2-08 A/C SWITCH DIODE-OUT(I)</p>
<p>G2-06 DUAL PRESSURE SWITCH(EM)</p>	<p>G2-07 A/C CYCLING SWITCH(EM)</p>	<p>G2-10 SHORT CONNECTOR(I)</p>	<p>G2-09 A/C SWITCH DIODE-IN(I)</p>		

HARNESS SYMBOL:  (F)  (E)  (R)



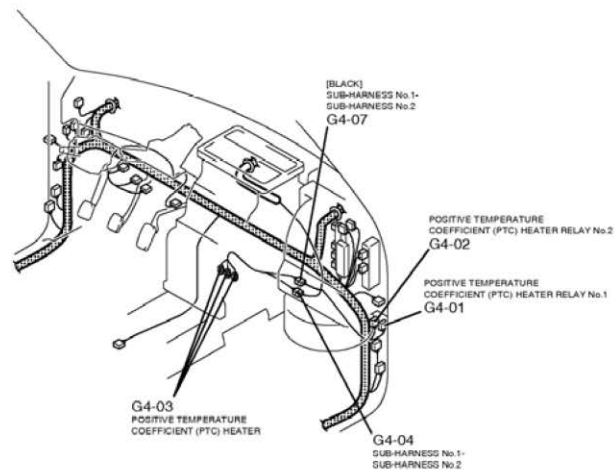
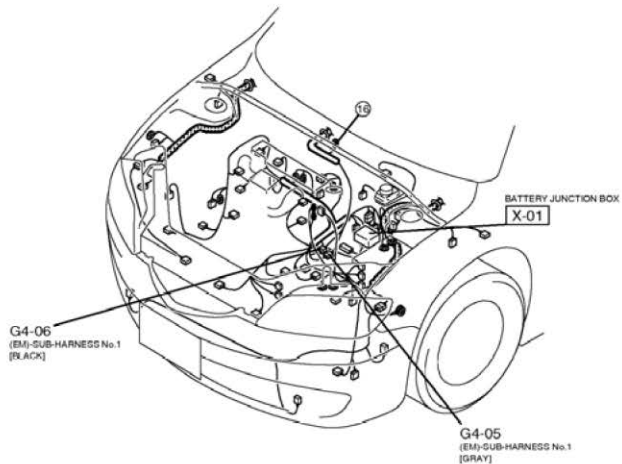
# POSITIVE TEMPERATURE COEFFICIENT (PTC) HEATER

G-4



<p>G4-01 POSITIVE TEMPERATURE COEFFICIENT(PTC) HEATER RELAY No.1(SUB-HARNESS No.1)</p>	<p>G4-02 POSITIVE TEMPERATURE COEFFICIENT(PTC) HEATER RELAY No.2(SUB-HARNESS No.1)</p>	<p>G4-03 POSITIVE TEMPERATURE COEFFICIENT(PTC) HEATER(SUB-HARNESS No.2)</p> <p>G4-04 SUB-HARNESS No.1-SUB-HARNESS No.2 (SUB-HARNESS No.1) (SUB-HARNESS No.2)</p>	
<p>G4-05 EMISSION(EM)-SUB-HARNESS No.1 (EM) (SUB-HARNESS No.1)</p>	<p>G4-06 EMISSION(EM)-SUB-HARNESS No.1 (EM) (SUB-HARNESS No.1)</p>	<p>G4-07 SUB-HARNESS No.1-SUB-HARNESS No.2 (SUB-HARNESS No.1) (SUB-HARNESS No.2)</p>	

HARNES SYMBOL:  (F)  (E)  (R)



# ALPHABETICAL INDEX

<b>A</b>			
A/C CYCLING SWITCH.....	20	WASHER PUMP RELAY, FRONT AND REAR.....	18
A/C SWITCH.....	20	WASHER SWITCH.....	18
A/C SWITCH DIODE.....	20	WINDOW WIPER MOTOR.....	18
ACCELERATOR PEDAL POSITION SENSOR.....	8	WINDSHIELD WIPER HIGH RELAY.....	18
		WINDSHIELD WIPER MOTOR.....	18
		WINDSHIELD WIPER RELAY.....	18
		WIPER SWITCH.....	18
		WIRING COLOR CODE.....	0
<b>B</b>			
BLOWER MOTOR SWITCH.....	20		
BRAKE PEDAL POSITION SWITCH.....	8		
<b>C</b>			
CAMSHAFT POSITION SENSOR.....	8		
CLUTCH PEDAL POSITION SWITCH.....	8		
CRANKSHAFT POSITION SENSOR.....	8		
<b>D</b>			
DUAL PRESSURE SWITCH.....	20		
<b>E</b>			
ENGINE COOLANT			
TEMPERATURE SENSOR.....	12		
EXHAUST GAS RECIRCULATION (EGR)			
VACUUM REGULATOR SOLENOID.....	10		
<b>F</b>			
FUEL HEATER.....	14		
FUEL METERING VALVE.....	10		
FUEL PRESSURE SOLENOID VALVE.....	10		
FUEL TEMPERATURE SENSOR.....	12		
<b>G</b>			
GLOW PLUG RELAY.....	16		
GLOW PLUG RESISTOR.....	14		
GROUND POINT.....	2		
<b>H</b>			
HEATER BLOWER MOTOR.....	20		
HEATER BLOWER MOTOR RELAY.....	20		
<b>M</b>			
MAIN RELAY.....	6		
MASS AIR FLOW SENSOR.....	10		
<b>P</b>			
PCM.....	6		
PIEZO INJECTOR.....	14		
POSITIVE TEMPERATURE			
COEFFICIENT (PTC) HEATER.....	22		
POSITIVE TEMPERATURE			
COEFFICIENT (PTC) HEATER RELAY.....	22		
PRE-GLOW RELAY, DIESEL.....	14		
<b>R</b>			
REAR WINDOW WIPER MOTOR.....	18		
REAR WIPER RELAY.....	18		
RESISTOR.....	20		
<b>V</b>			
VEHICLE IDENTIFICATION NUMBER.....	0		
VEHICLE SPEED SENSOR.....	6		
<b>W</b>			
WASHER PUMP MOTOR,			
FRONT AND REAR.....	18		